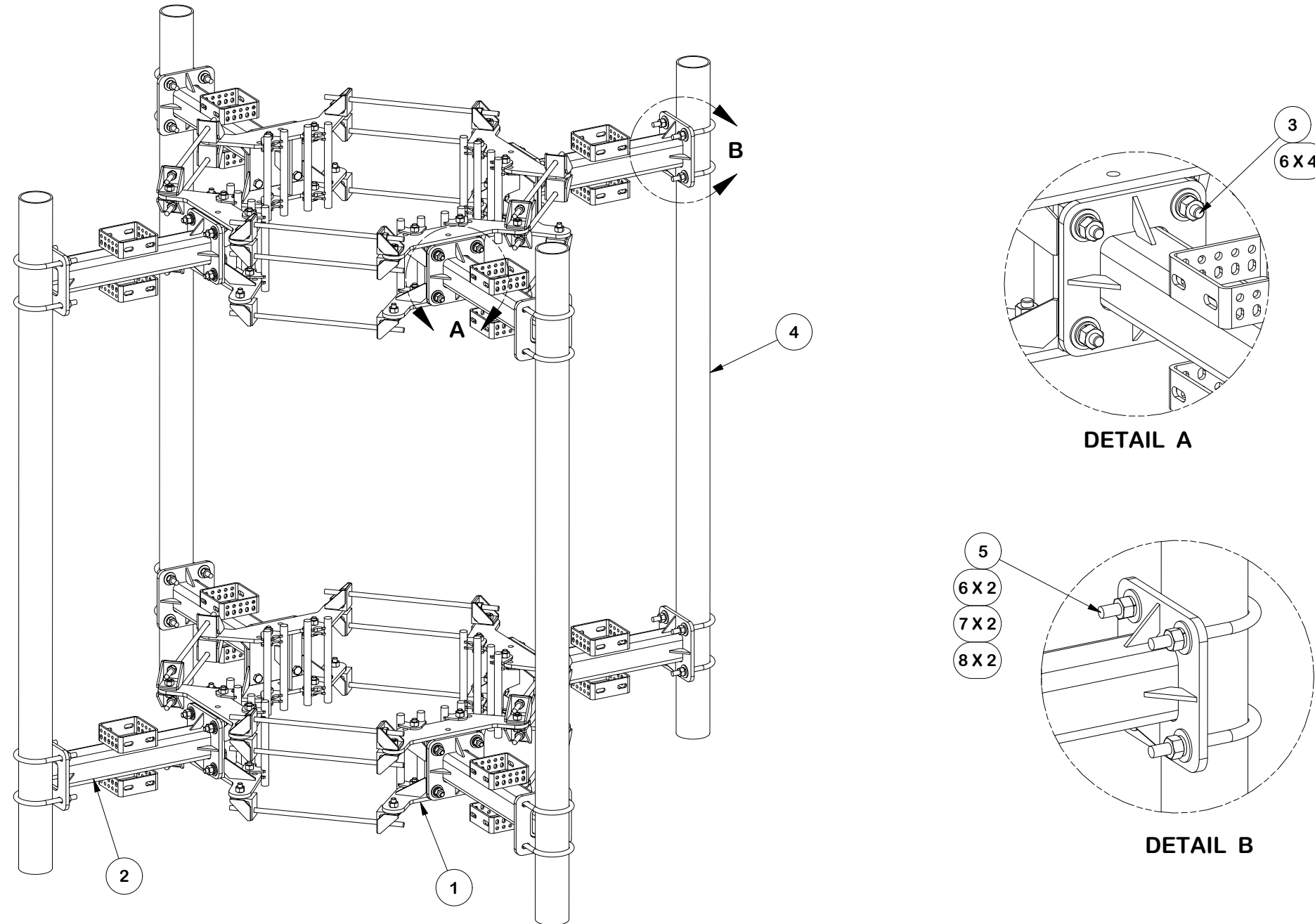


PARTS LIST						
ITEM	QTY	PART NO.	PART DESCRIPTION	LENGTH	UNIT WT.	NET WT.
1	2	FLX4-SD	FLEXIBLE RING MOUNT 4-SIDED SD ASSEMBLY		373.49	746.97
2	8	X-WWM02-HD	2' HEAVY DUTY STAND-OFF ARM / WALL MOUNT	24 in	60.24	481.90
3	8	SV197-HDWE	STANDOFF TO COLLAR ATTACHMENT HARDWARE		2.18	17.47
4	4	P496	4-1/2" X 96" SCH. 40 GALVANIZED PIPE	96 in	91.60	366.40
5	16	X-UB5458	5/8 X 4-5/8" X 7" X 3" U-BOLT	7 in	1.63	26.03
6	64	G58FW	5/8" HDG USS FLATWASHER	1/8 in	0.07	4.51
7	32	G58LW	5/8" HDG LOCKWASHER		0.03	0.83
8	32	G58NUT	5/8" HDG HEAVY 2H HEX NUT		0.13	4.16
					TOTAL WT. #	1648.28



FINISH:
HOT DIP GALVANIZED.

TOLERANCE NOTES

TOLERANCES ON DIMENSIONS, UNLESS OTHERWISE NOTED ARE:
 SAWED, SHEARED AND GAS CUT EDGES ($\pm 0.030"$)
 DRILLED AND GAS CUT HOLES ($\pm 0.030"$) - NO CONING OF HOLES
 LASER CUT EDGES AND HOLES ($\pm 0.010"$) - NO CONING OF HOLES
 BENDS AND ANGLES ARE $\pm 1/2$ DEGREE
 ALL OTHER MACHINING ($\pm 0.030"$)
 ALL OTHER ASSEMBLY ($\pm 0.060"$)

PATENT INFORMATION: WWW.SITEPRO1.COM/PATENTS

PROPRIETARY NOTE:
 THE DATA AND TECHNIQUES CONTAINED IN THIS DRAWING ARE PROPRIETARY INFORMATION OF VALMONT INDUSTRIES AND CONSIDERED A TRADE SECRET. ANY USE OR DISCLOSURE WITHOUT THE CONSENT OF VALMONT INDUSTRIES IS STRICTLY PROHIBITED.

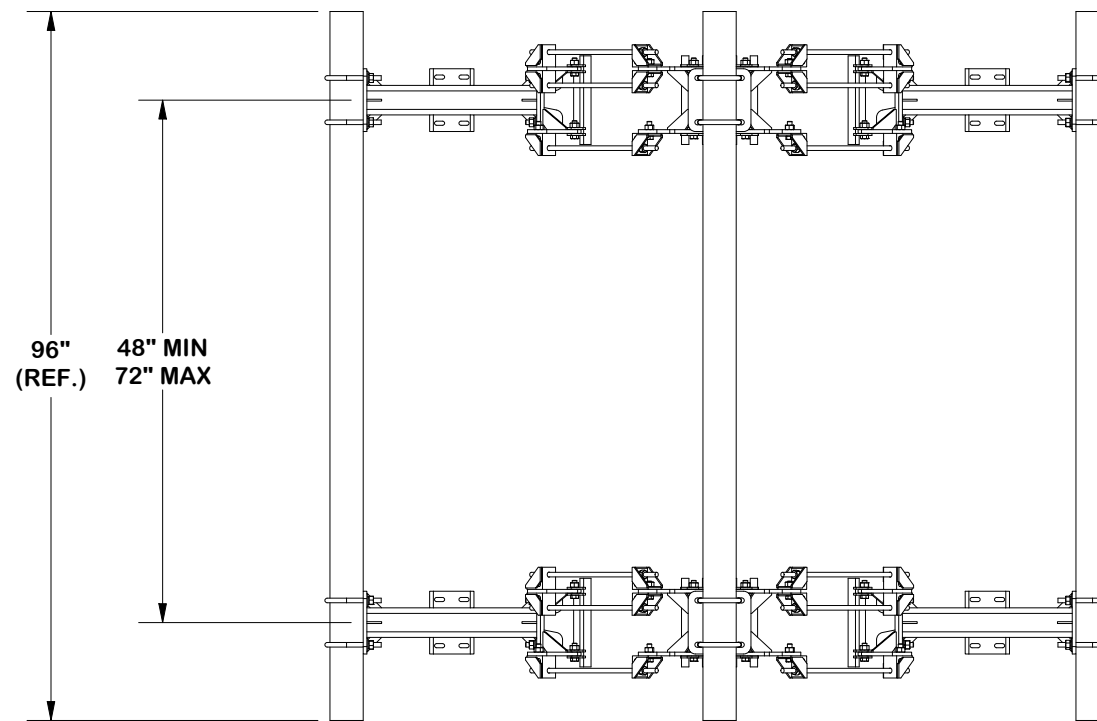
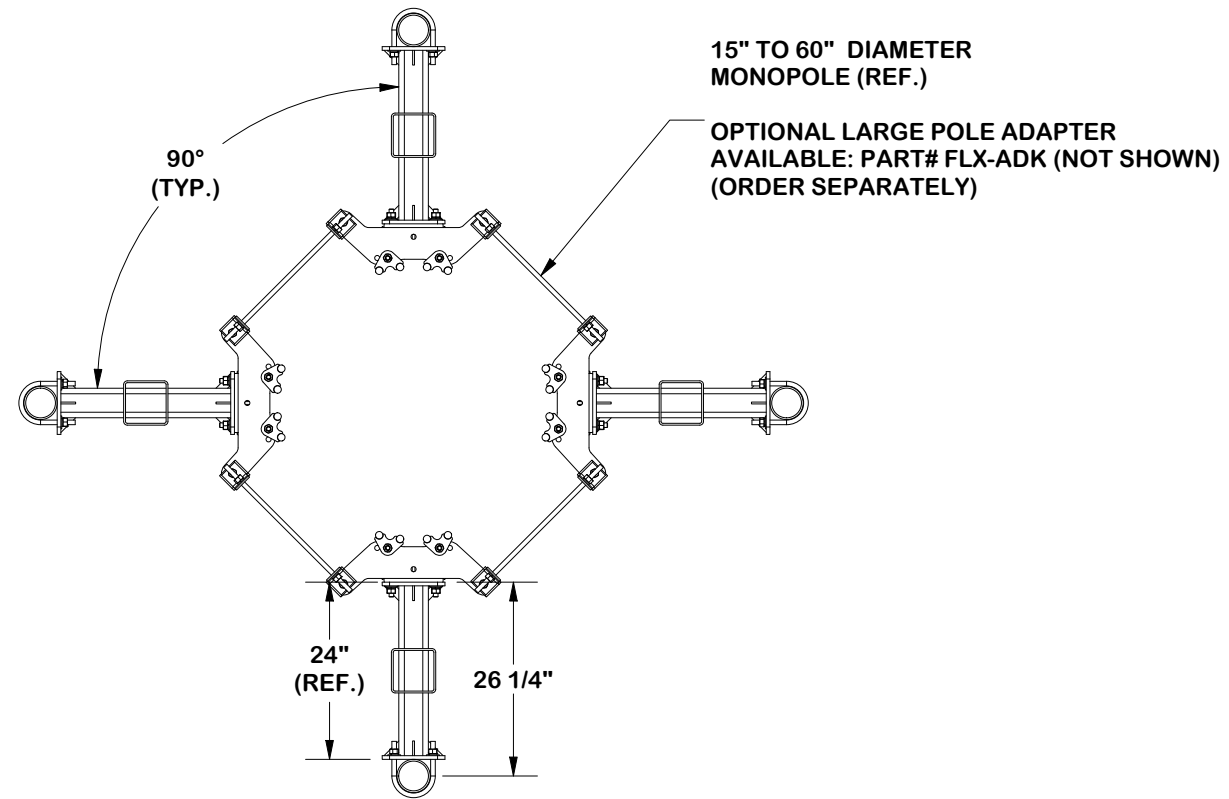
DESCRIPTION
**MONOPOLE 4 SECTOR
 FLEX FRAME ATTACHMENT ASSEMBLY
 W/ 24" STANDOFF**



Engineering Support Team:
 sp1engineering@valmont.com

CPD NO. SP1	DRAWN BY SDR 8/26/2025	ENG. APPROVAL 2/9/2026
CLASS 87	SUB 02	DRAWING USAGE CUSTOMER
		CHECKED BY CSL 2/9/2026

PART NO. MSFAA-24-FLX4	PAGE 1 OF 9
DWG. NO. MSFAA-24-FLX4	



TOLERANCE NOTES

TOLERANCES ON DIMENSIONS, UNLESS OTHERWISE NOTED ARE:
 SAWED, SHEARED AND GAS CUT EDGES ($\pm 0.030"$)
 DRILLED AND GAS CUT HOLES ($\pm 0.030"$) - NO CONING OF HOLES
 LASER CUT EDGES AND HOLES ($\pm 0.010"$) - NO CONING OF HOLES
 BENDS AND ANGLES ARE $\pm 1/2$ DEGREE
 ALL OTHER MACHINING ($\pm 0.030"$)
 ALL OTHER ASSEMBLY ($\pm 0.060"$)

PATENT INFORMATION: WWW.SITEPRO1.COM/PATENTS

PROPRIETARY NOTE:
 THE DATA AND TECHNIQUES CONTAINED IN THIS DRAWING ARE PROPRIETARY INFORMATION OF VALMONT INDUSTRIES AND CONSIDERED A TRADE SECRET. ANY USE OR DISCLOSURE WITHOUT THE CONSENT OF VALMONT INDUSTRIES IS STRICTLY PROHIBITED.

DESCRIPTION
**MONOPOLE 4 SECTOR
 FLEX FRAME ATTACHMENT ASSEMBLY
 W/ 24" STANDOFF**

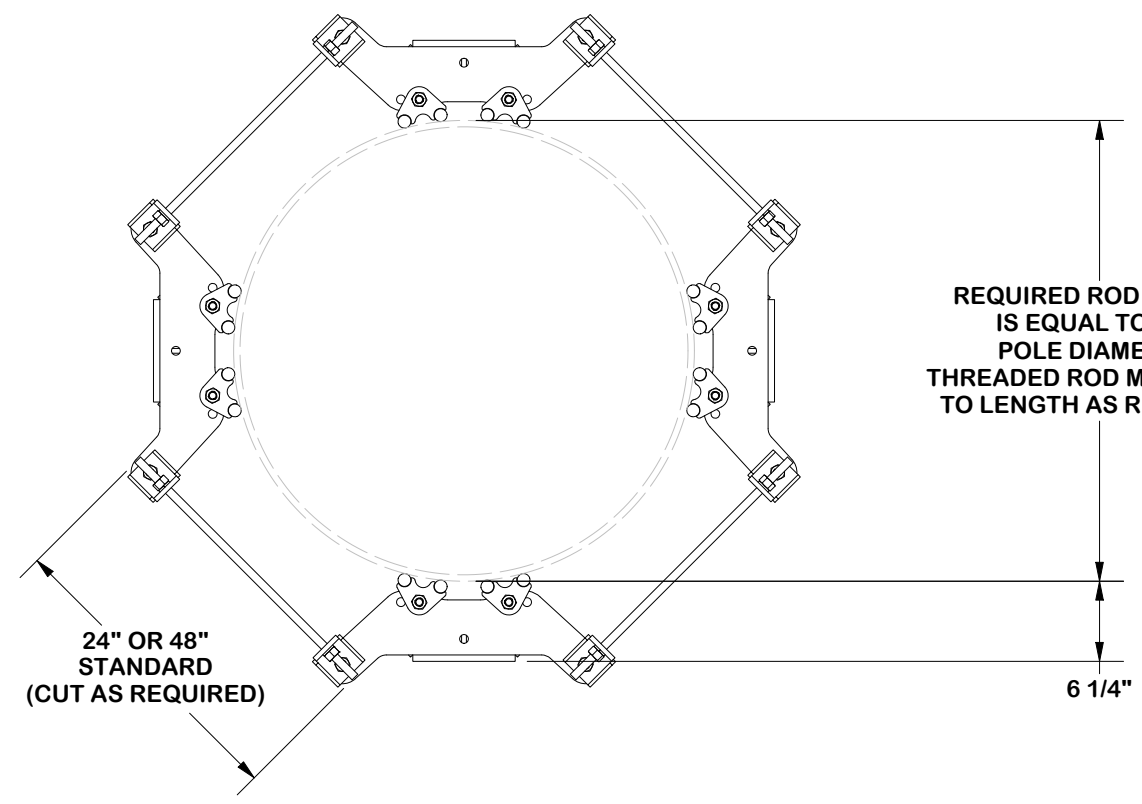
CPD NO. SP1	DRAWN BY SDR 8/26/2025	ENG. APPROVAL 2/9/2026
CLASS 87	SUB 02	DRAWING USAGE CUSTOMER
CHECKED BY CSL 2/9/2026		



Engineering Support Team:
sp1engineering@valmont.com

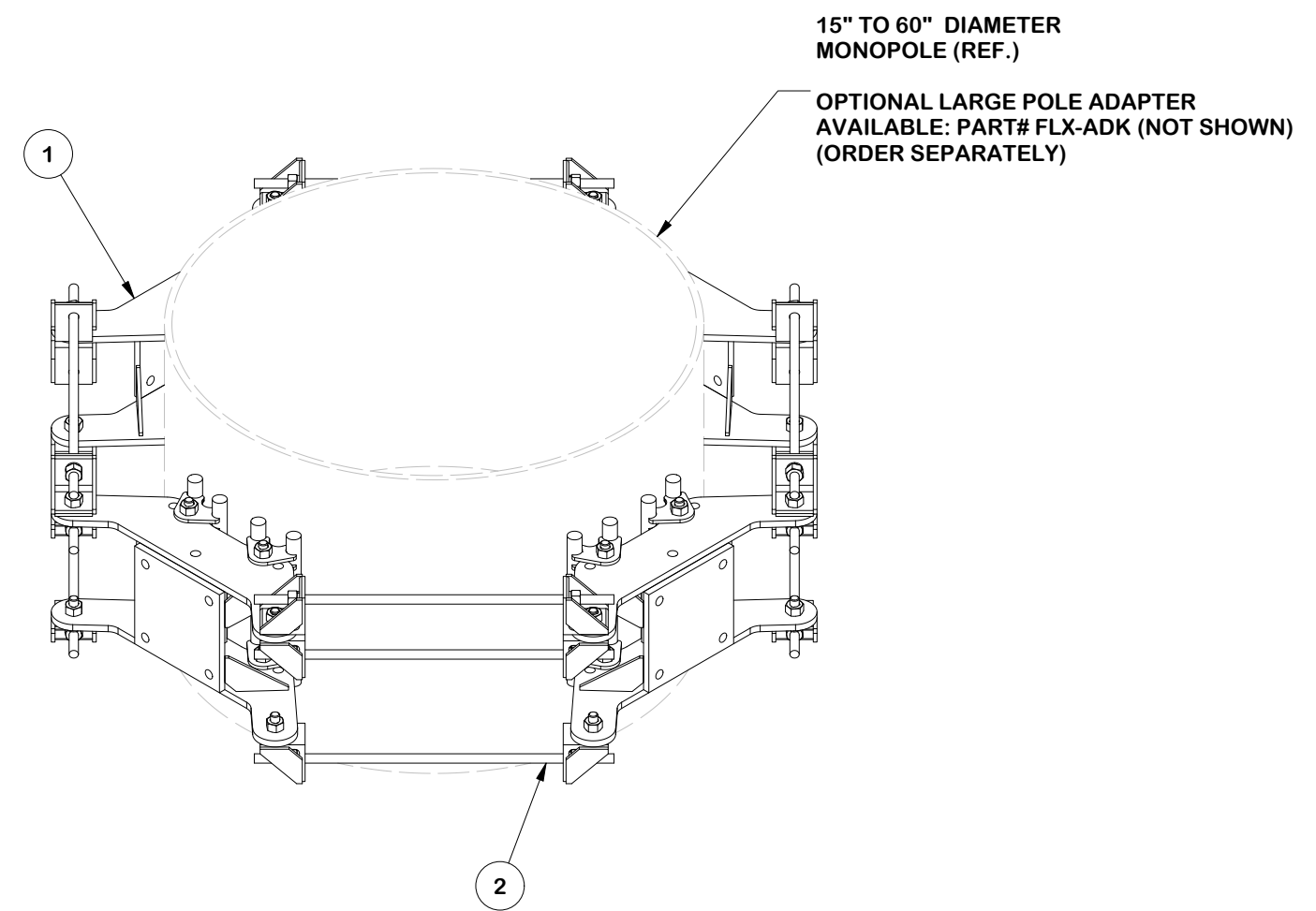
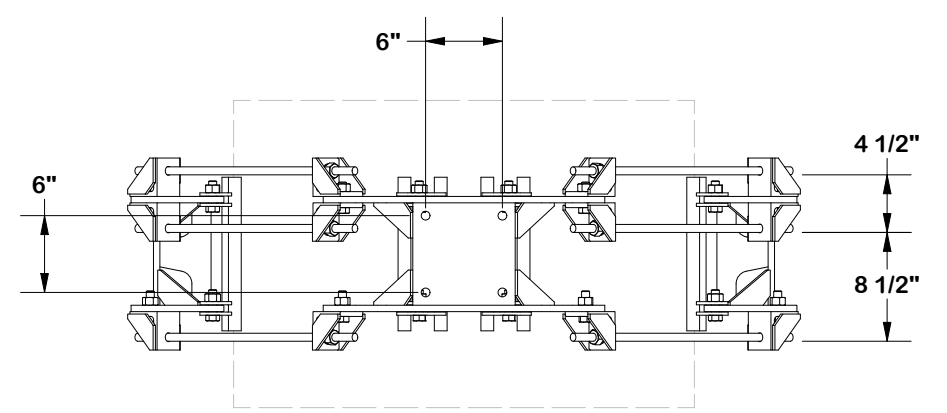
PART NO.	
DWG. NO.	MSFAA-24-FLX4

PARTS LIST						UNIT WT.	NET WT.
1	4	FLX-SDSS	P-FLX-SDSS	FLEXIBLE RING MOUNT SINGLE SECTOR ASSEMBLY	72.51	290.06	
2	1	UQB4-HDWE	P-UQB4-HDWE	HARDWARE KIT FOR 4-SIDED SD COLLAR	83.43	83.43	
TOTAL WT. #							



REQUIRED ROD LENGTH IS EQUAL TO THE POLE DIAMETER. THREADED ROD MAY BE CUT TO LENGTH AS REQUIRED.

- NOTES:**
1. LOCKNUTS CANNOT BE LOOSEND.
 2. TIGHTEN LOCKNUTS AFTER DESIRED POSITION (SEE PAGE 3).
 3. FITS 6" X 6" HOLE PATTERN



FINISH:
HOT DIP GALVANIZED.

TOLERANCE NOTES

TOLERANCES ON DIMENSIONS, UNLESS OTHERWISE NOTED ARE:
 SAWED, SHEARED AND GAS CUT EDGES ($\pm 0.030"$)
 DRILLED AND GAS CUT HOLES ($\pm 0.030"$) - NO CONING OF HOLES
 LASER CUT EDGES AND HOLES ($\pm 0.010"$) - NO CONING OF HOLES
 BENDS AND ANGLES ARE $\pm 1/2$ DEGREE
 ALL OTHER MACHINING ($\pm 0.030"$)
 ALL OTHER ASSEMBLY ($\pm 0.060"$)

DESCRIPTION
**MONOPOLE 4 SECTOR
 FLEX FRAME ATTACHMENT ASSEMBLY
 W/ 24" STANDOFF**

SITE PRO 1
 A valmont COMPANY

Engineering Support Team:
 sp1engineering@valmont.com

REV	DESCRIPTION OF REVISIONS	CPD	BY	DATE
B	UPDATED NOTES AND ADDED CABLE GUIDE REF	SP1	ADB	12/11/2025
A	CHANGED KIT	SP1	NSP	11/12/2024

PATENT INFORMATION: WWW.SITEPRO1.COM/PATENTS

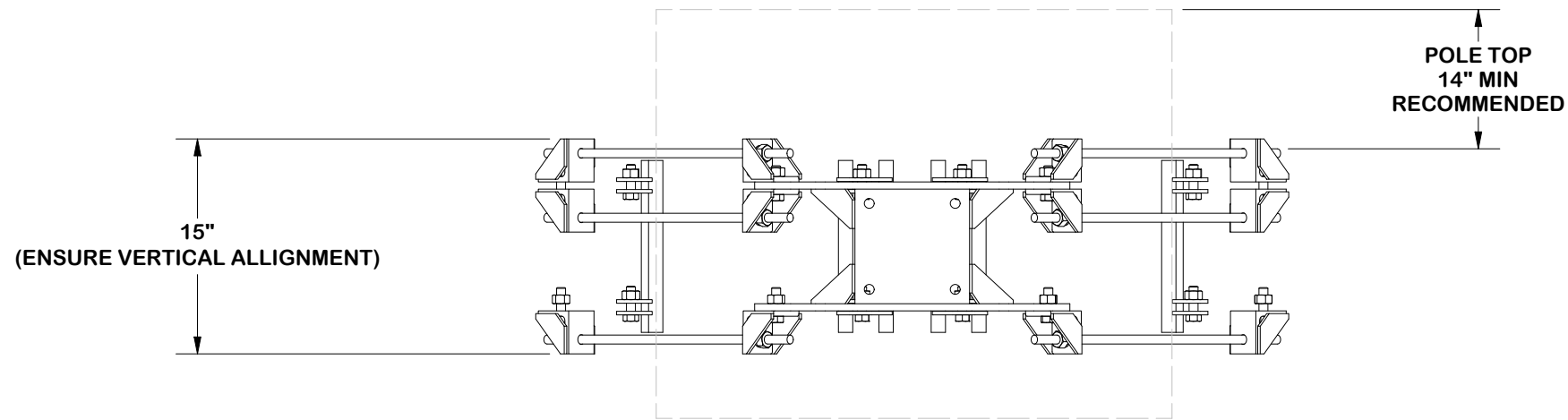
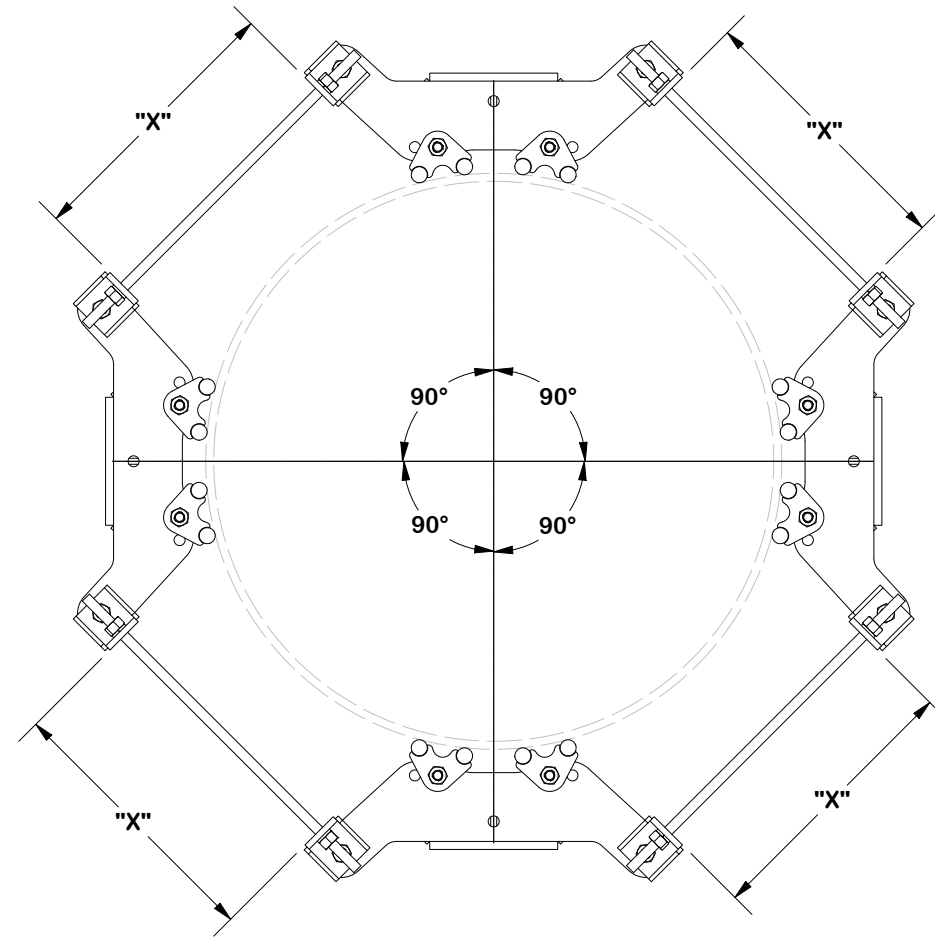
PROPRIETARY NOTE:
 THE DATA AND TECHNIQUES CONTAINED IN THIS DRAWING ARE PROPRIETARY INFORMATION OF VALMONT INDUSTRIES AND CONSIDERED A TRADE SECRET. ANY USE OR DISCLOSURE WITHOUT THE CONSENT OF VALMONT INDUSTRIES IS STRICTLY PROHIBITED.

CPD NO. SP1	DRAWN BY SDR 8/26/2025	ENG. APPROVAL 2/9/2026
CLASS 87	SUB 02	DRAWING USAGE CUSTOMER
CHECKED BY CSL 2/9/2026		

PART NO.	DWG. NO.
	MSFAA-24-FLX4

NOTE:
 ENSURE EQUAL DISTANCE
 BETWEEN BRACKETS "X"
 AND AT 120° APART FOR PLATFORMS.

DEVIATION IS ACCEPTABLE
 WITH EOR APPROVAL.



TOLERANCE NOTES

TOLERANCES ON DIMENSIONS, UNLESS OTHERWISE NOTED ARE:
 SAWED, SHEARED AND GAS CUT EDGES ($\pm 0.030"$)
 DRILLED AND GAS CUT HOLES ($\pm 0.030"$) - NO CONING OF HOLES
 LASER CUT EDGES AND HOLES ($\pm 0.010"$) - NO CONING OF HOLES
 BENDS AND ANGLES ARE $\pm 1/2$ DEGREE
 ALL OTHER MACHINING ($\pm 0.030"$)
 ALL OTHER ASSEMBLY ($\pm 0.060"$)

PATENT INFORMATION: WWW.SITEPRO1.COM/PATENTS

PROPRIETARY NOTE:
 THE DATA AND TECHNIQUES CONTAINED IN THIS DRAWING ARE PROPRIETARY INFORMATION OF VALMONT INDUSTRIES AND CONSIDERED A TRADE SECRET. ANY USE OR DISCLOSURE WITHOUT THE CONSENT OF VALMONT INDUSTRIES IS STRICTLY PROHIBITED.

DESCRIPTION
**MONOPOLE 4 SECTOR
 FLEX FRAME ATTACHMENT ASSEMBLY
 W/ 24" STANDOFF**

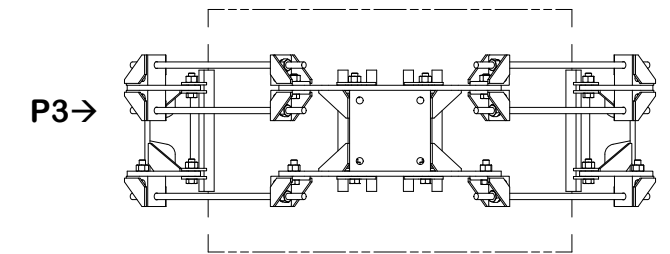
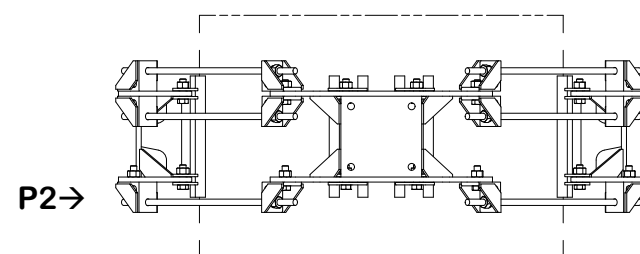
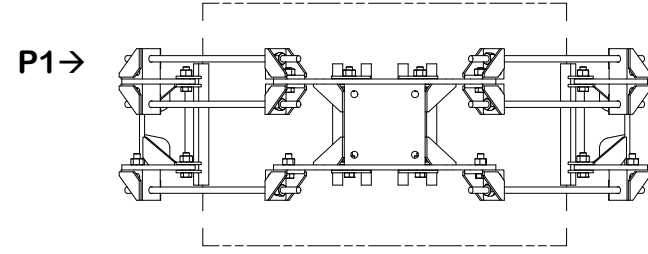
CPD NO. SP1	DRAWN BY SDR 8/26/2025	ENG. APPROVAL 2/9/2026
CLASS 87	SUB 02	DRAWING USAGE CUSTOMER
	CHECKED BY CSL	2/9/2026



Engineering Support Team:
 sp1engineering@valmont.com

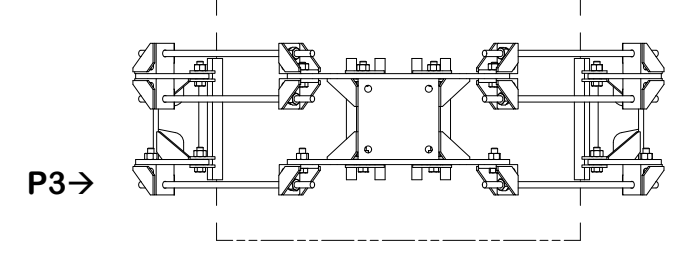
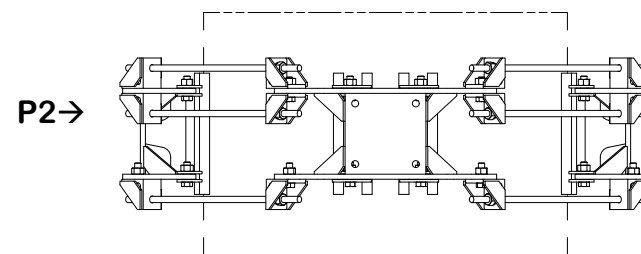
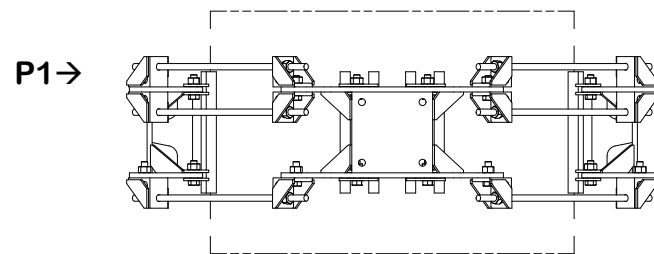
PART NO.	
DWG. NO.	MSFAA-24-FLX4

INSTALL ORDER

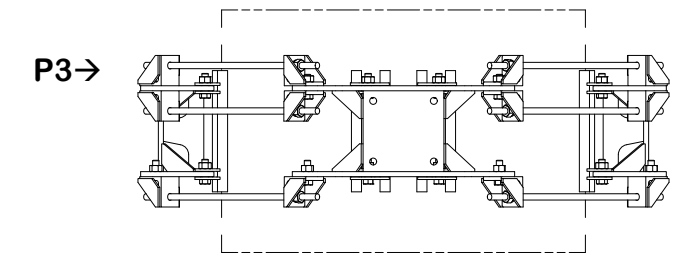
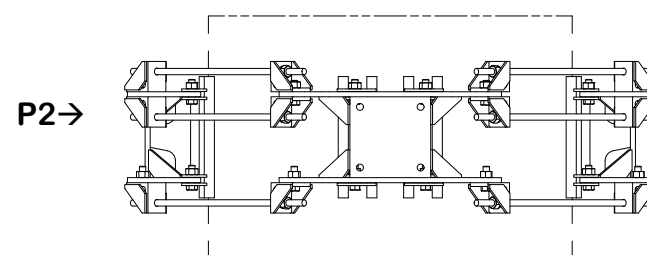
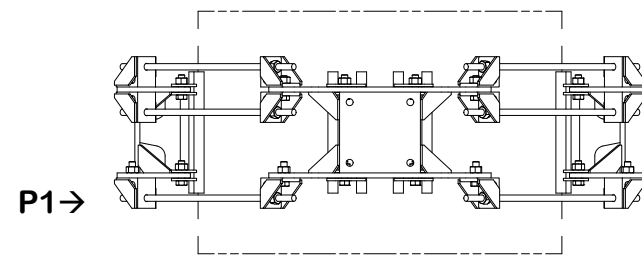


INITIAL TIGHTENING

NOTE:
DURING INITIAL TIGHTENING, P1 AND P2 MUST BE TIGHTENED FIRST
TO PULL THE UPPER CLAMP PLATES INTO FULL CONTACT WITH THE POLE.
ENSURE THE CLAMP MAKES TOP CONTACT BEFORE PROCEEDING WITH ANY ADDITIONAL TIGHTENING.



FINAL TIGHTENING



TOLERANCE NOTES

TOLERANCES ON DIMENSIONS, UNLESS OTHERWISE NOTED ARE:
 SAWED, SHEARED AND GAS CUT EDGES ($\pm 0.030"$)
 DRILLED AND GAS CUT HOLES ($\pm 0.030"$) - NO CONING OF HOLES
 LASER CUT EDGES AND HOLES ($\pm 0.010"$) - NO CONING OF HOLES
 BENDS AND ANGLES ARE $\pm 1/2$ DEGREE
 ALL OTHER MACHINING ($\pm 0.030"$)
 ALL OTHER ASSEMBLY ($\pm 0.060"$)

PATENT INFORMATION: WWW.SITEPRO1.COM/PATENTS

PROPRIETARY NOTE:
 THE DATA AND TECHNIQUES CONTAINED IN THIS DRAWING ARE PROPRIETARY INFORMATION OF VALMONT INDUSTRIES AND CONSIDERED A TRADE SECRET. ANY USE OR DISCLOSURE WITHOUT THE CONSENT OF VALMONT INDUSTRIES IS STRICTLY PROHIBITED.

DESCRIPTION
**MONOPOLE 4 SECTOR
 FLEX FRAME ATTACHMENT ASSEMBLY
 W/ 24" STANDOFF**

CPD NO. SP1	DRAWN BY SDR 8/26/2025	ENG. APPROVAL 2/9/2026
CLASS 87	SUB 02	DRAWING USAGE CUSTOMER
CHECKED BY CSL 2/9/2026		

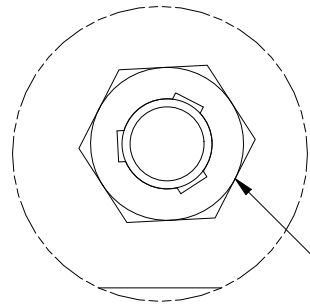
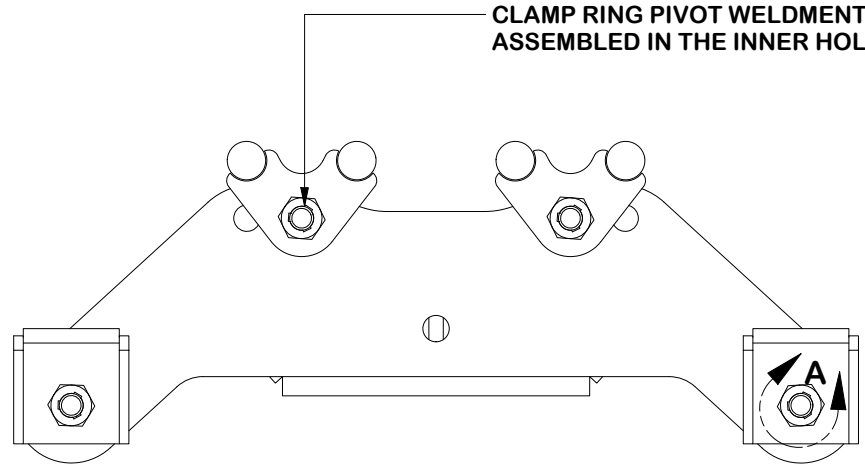


Engineering Support Team:
sp1engineering@valmont.com

PART NO.	
DWG. NO.	MSFAA-24-FLX4

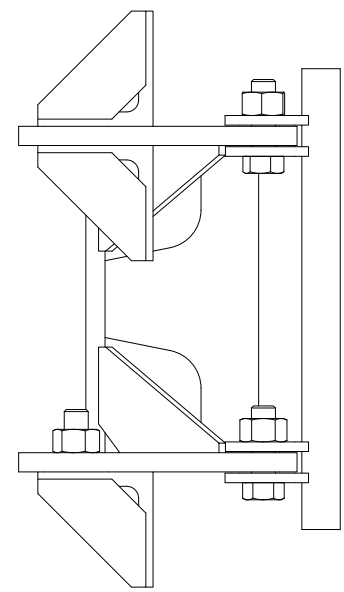
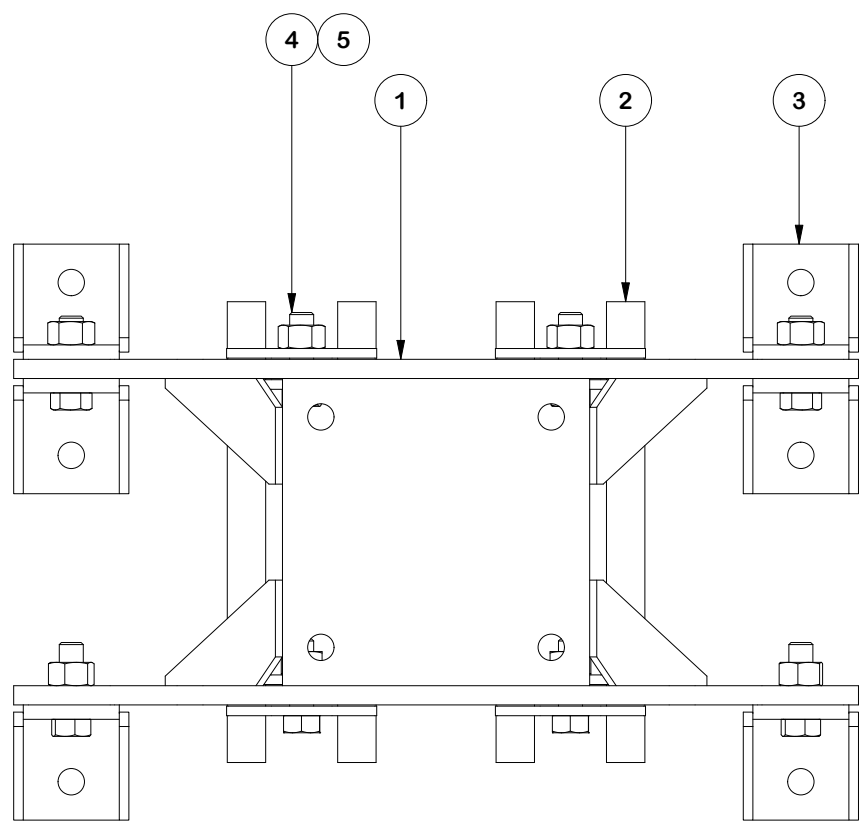
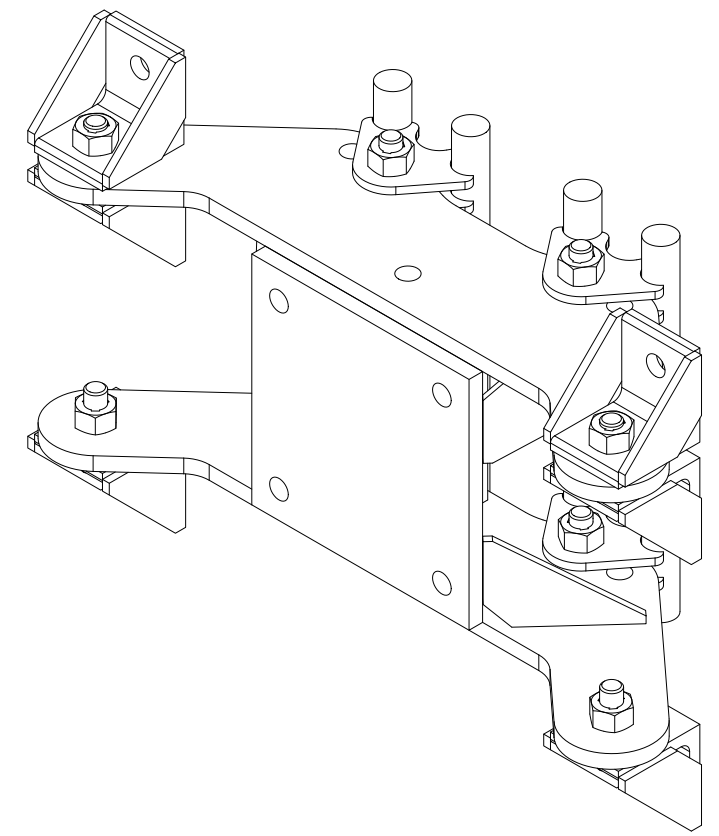
PARTS LIST					
ITEM	QTY	PART NO.	PART DESCRIPTION	UNIT WT.	NET WT.
1	1	X-CR-SDW	FLEXIBLE RING MOUNT	42.23	42.23
2	2	X-CR-PW12	12" CLAMP RING PIVOT WELDMENT	6.93	13.85
3	6	X-CR-AGW	ANGLE ON WELDMENT	2.20	13.18
4	8	G5802	5/8" x 2" HDG HEX BOLT GR5	0.27	2.16
5	8	G58TRI-LNUT	5/8" HDG HEAVY 2H TRI-LOCK NUT	0.14	1.10
TOTAL WT. #					

NOTE:
CLAMP RING PIVOT WELDMENT SHOULD BE ASSEMBLED IN THE INNER HOLE OF WELDMENT



DETAIL A

NOTE:
FOR TRI-LOCKNUT INSTALLATION, ENSURE THE GROOVED SIDE IS ORIENTED AWAY FROM BOLT HEAD



FINISH:
HOT DIP GALVANIZED.

TOLERANCE NOTES
 TOLERANCES ON DIMENSIONS, UNLESS OTHERWISE NOTED ARE:
 SAWED, SHEARED AND GAS CUT EDGES ($\pm 0.030"$)
 DRILLED AND GAS CUT HOLES ($\pm 0.030"$) - NO CONING OF HOLES
 LASER CUT EDGES AND HOLES ($\pm 0.010"$) - NO CONING OF HOLES
 BENDS AND ANGLES ARE $\pm 1/2$ DEGREE
 ALL OTHER MACHINING ($\pm 0.030"$)
 ALL OTHER ASSEMBLY ($\pm 0.060"$)

PATENT INFORMATION: WWW.SITEPRO1.COM/PATENTS

DESCRIPTION
**MONOPOLE 4 SECTOR
 FLEX FRAME ATTACHMENT ASSEMBLY
 W/ 24" STANDOFF**

CPD NO. **SP1** DRAWN BY **SDR 8/26/2025** ENG. APPROVAL **2/9/2026**

SITE PRO 1
 A valmont COMPANY

Engineering Support Team:
 sp1engineering@valmont.com

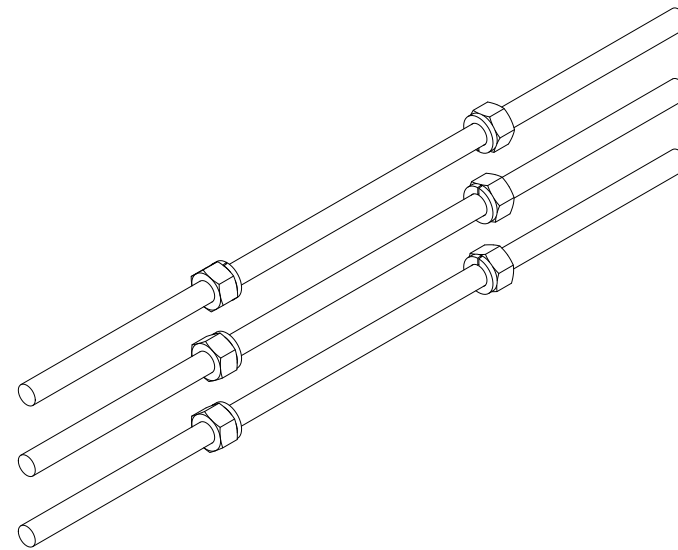
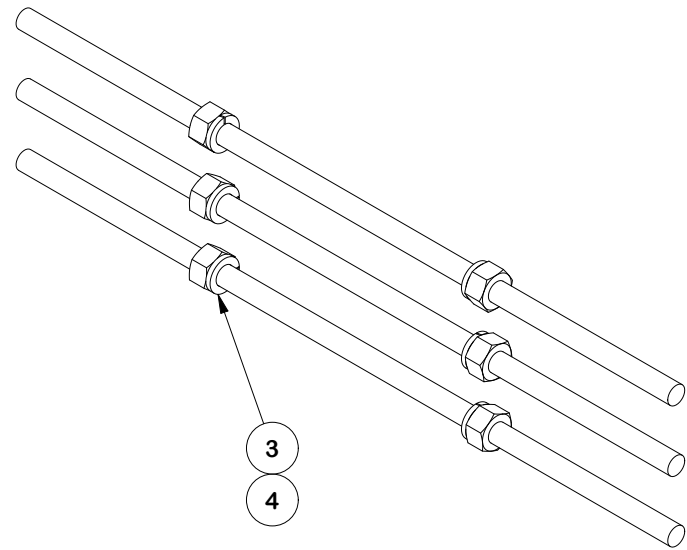
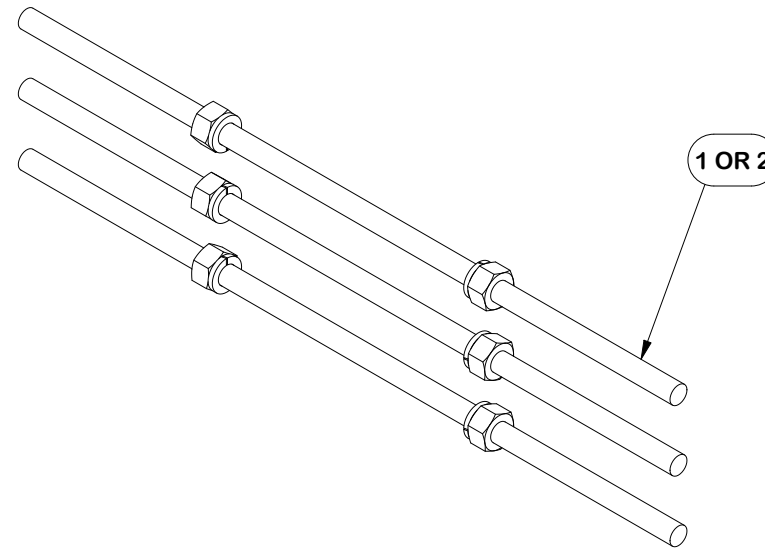
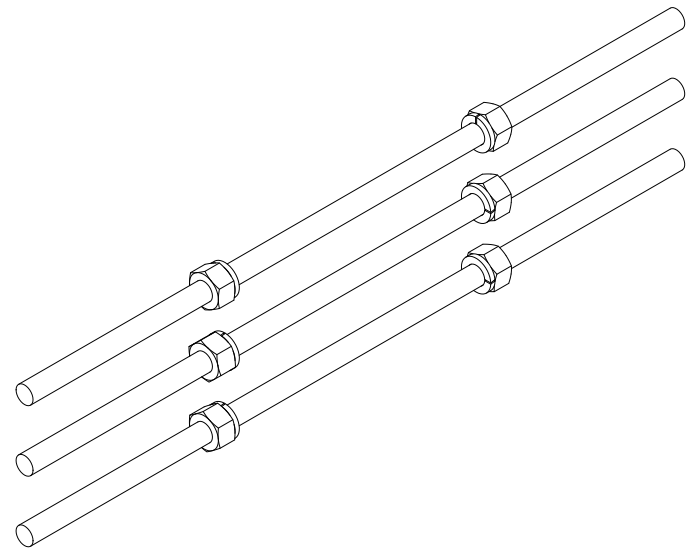
PART NO. _____

PROPRIETARY NOTE:
 THE DATA AND TECHNIQUES CONTAINED IN THIS DRAWING ARE PROPRIETARY INFORMATION OF VALMONT INDUSTRIES AND CONSIDERED A TRADE SECRET. ANY USE OR DISCLOSURE WITHOUT THE CONSENT OF VALMONT INDUSTRIES IS STRICTLY PROHIBITED.

CLASS **87** SUB **02** DRAWING USAGE **CUSTOMER** CHECKED BY **CSL 2/9/2026**

DWG. NO. **MSFAA-24-FLX4**

PARTS LIST					
ITEM	QTY	PART NO.	PART DESCRIPTION	UNIT WT.	NET WT.
1	12	G58R-24	5/8" X 24" THREADED ROD (HDG.)	2.21	26.56
2	12	G58R-48	5/8" X 48" THREADED ROD (HDG.)	4.43	53.12
3	24	G58LW	5/8" HDG LOCKWASHER	0.03	0.63
4	24	G58NUT	5/8" HDG HEAVY 2H HEX NUT	0.13	3.12
TOTAL WT. #					



TOLERANCE NOTES

TOLERANCES ON DIMENSIONS, UNLESS OTHERWISE NOTED ARE:
 SAWED, SHEARED AND GAS CUT EDGES ($\pm 0.030"$)
 DRILLED AND GAS CUT HOLES ($\pm 0.030"$) - NO CONING OF HOLES
 LASER CUT EDGES AND HOLES ($\pm 0.010"$) - NO CONING OF HOLES
 BENDS AND ANGLES ARE $\pm 1/2$ DEGREE
 ALL OTHER MACHINING ($\pm 0.030"$)
 ALL OTHER ASSEMBLY ($\pm 0.060"$)

PATENT INFORMATION: WWW.SITEPRO1.COM/PATENTS

PROPRIETARY NOTE:
 THE DATA AND TECHNIQUES CONTAINED IN THIS DRAWING ARE PROPRIETARY INFORMATION OF VALMONT INDUSTRIES AND CONSIDERED A TRADE SECRET. ANY USE OR DISCLOSURE WITHOUT THE CONSENT OF VALMONT INDUSTRIES IS STRICTLY PROHIBITED.

DESCRIPTION
**MONOPOLE 4 SECTOR
 FLEX FRAME ATTACHMENT ASSEMBLY
 W/ 24" STANDOFF**



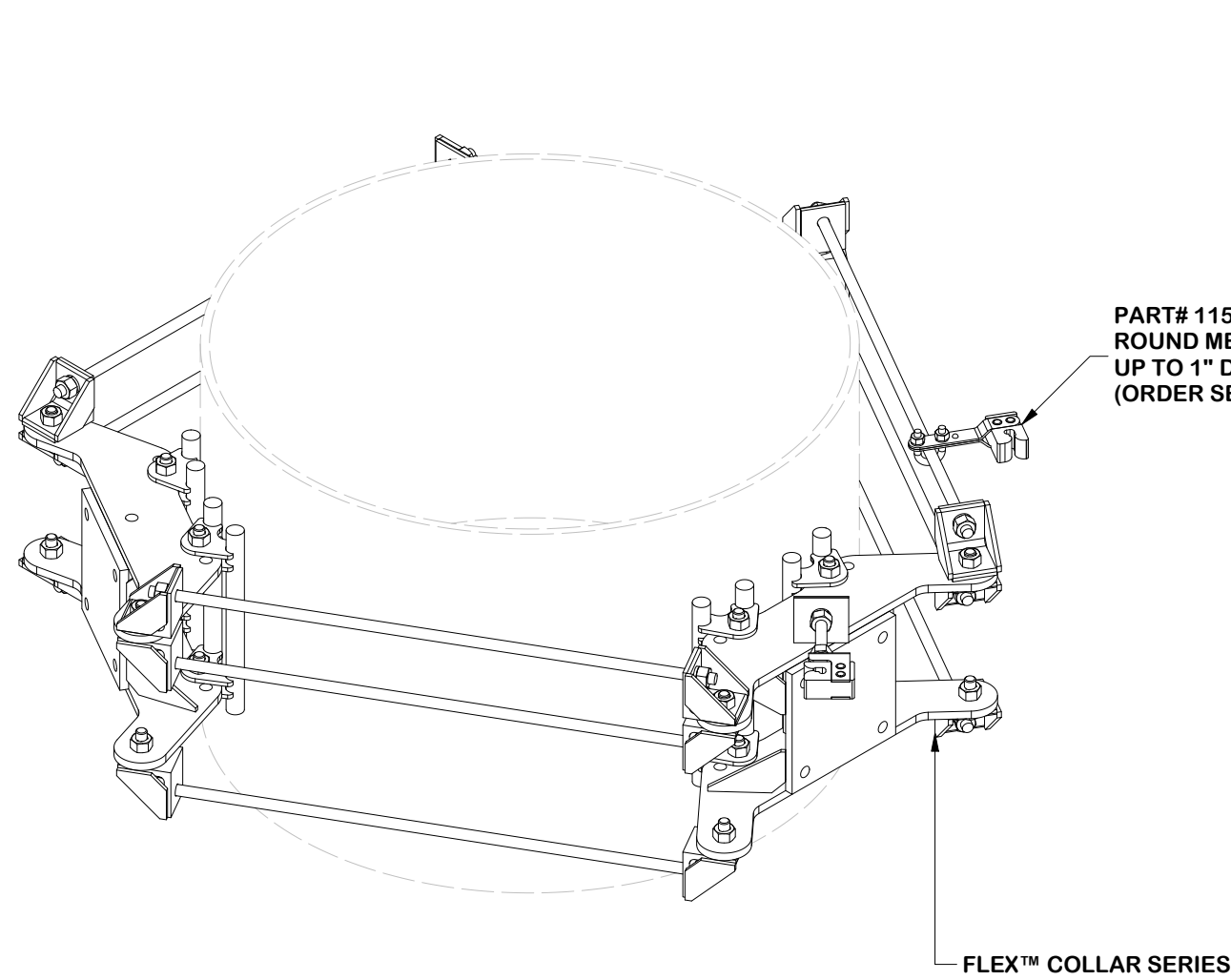
Engineering Support Team:
 sp1engineering@valmont.com

A valmont COMPANY

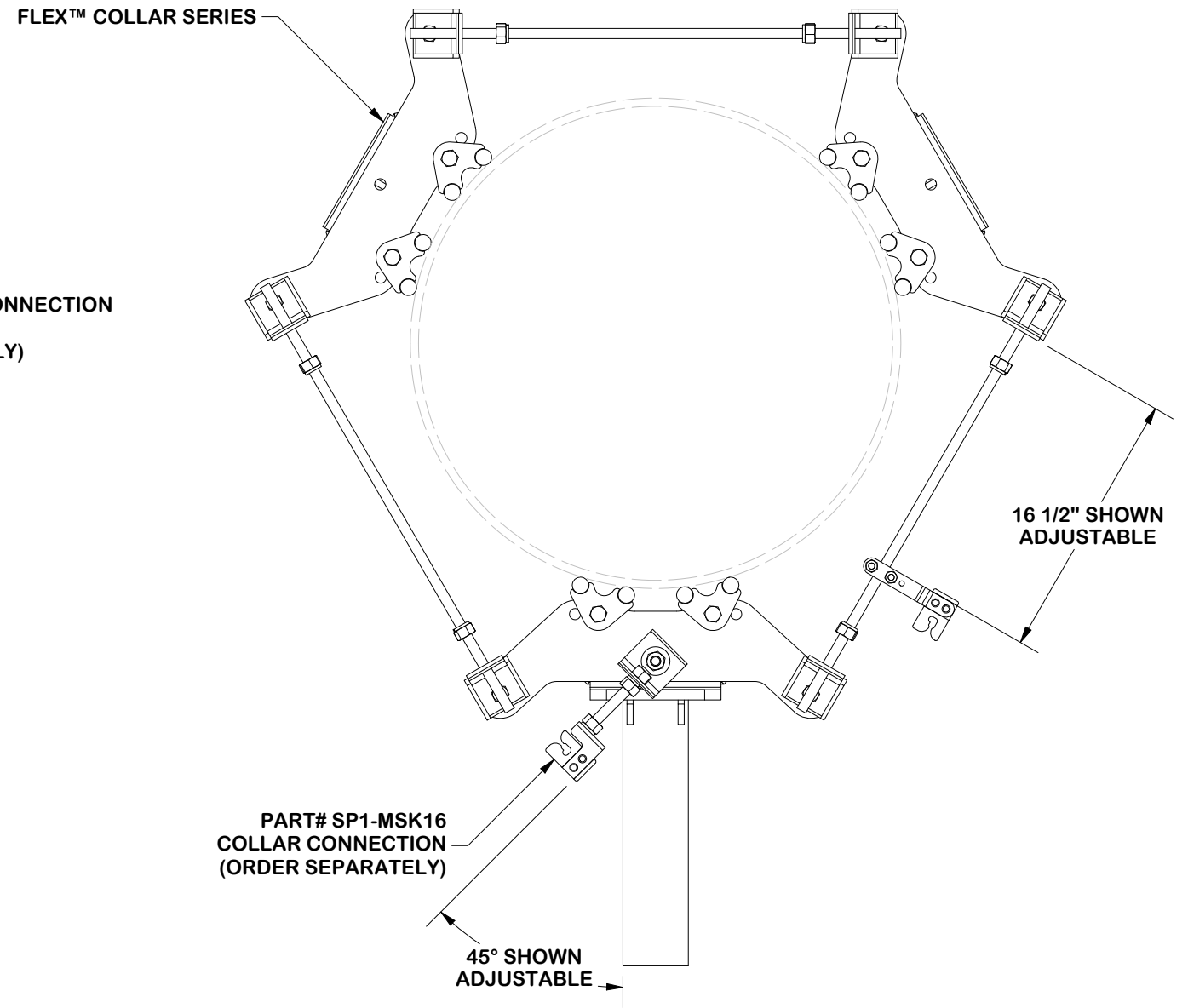
CPD NO. SP1	DRAWN BY SDR 8/26/2025	ENG. APPROVAL 2/9/2026
CLASS 87	SUB 02	DRAWING USAGE CUSTOMER
CHECKED BY CSL 2/9/2026		

PART NO.	
DWG. NO.	MSFAA-24-FLX4

CABLE GUIDE REFERENCE



ISO VIEW



TOP VIEW

TOLERANCE NOTES

TOLERANCES ON DIMENSIONS, UNLESS OTHERWISE NOTED ARE:
 SAWED, SHEARED AND GAS CUT EDGES ($\pm 0.030"$)
 DRILLED AND GAS CUT HOLES ($\pm 0.030"$) - NO CONING OF HOLES
 LASER CUT EDGES AND HOLES ($\pm 0.010"$) - NO CONING OF HOLES
 BENDS AND ANGLES ARE $\pm 1/2$ DEGREE
 ALL OTHER MACHINING ($\pm 0.030"$)
 ALL OTHER ASSEMBLY ($\pm 0.060"$)

PATENT INFORMATION: WWW.SITEPRO1.COM/PATENTS

PROPRIETARY NOTE:
 THE DATA AND TECHNIQUES CONTAINED IN THIS DRAWING ARE PROPRIETARY INFORMATION OF VALMONT INDUSTRIES AND CONSIDERED A TRADE SECRET. ANY USE OR DISCLOSURE WITHOUT THE CONSENT OF VALMONT INDUSTRIES IS STRICTLY PROHIBITED.

DESCRIPTION
**MONOPOLE 4 SECTOR
 FLEX FRAME ATTACHMENT ASSEMBLY
 W/ 24" STANDOFF**

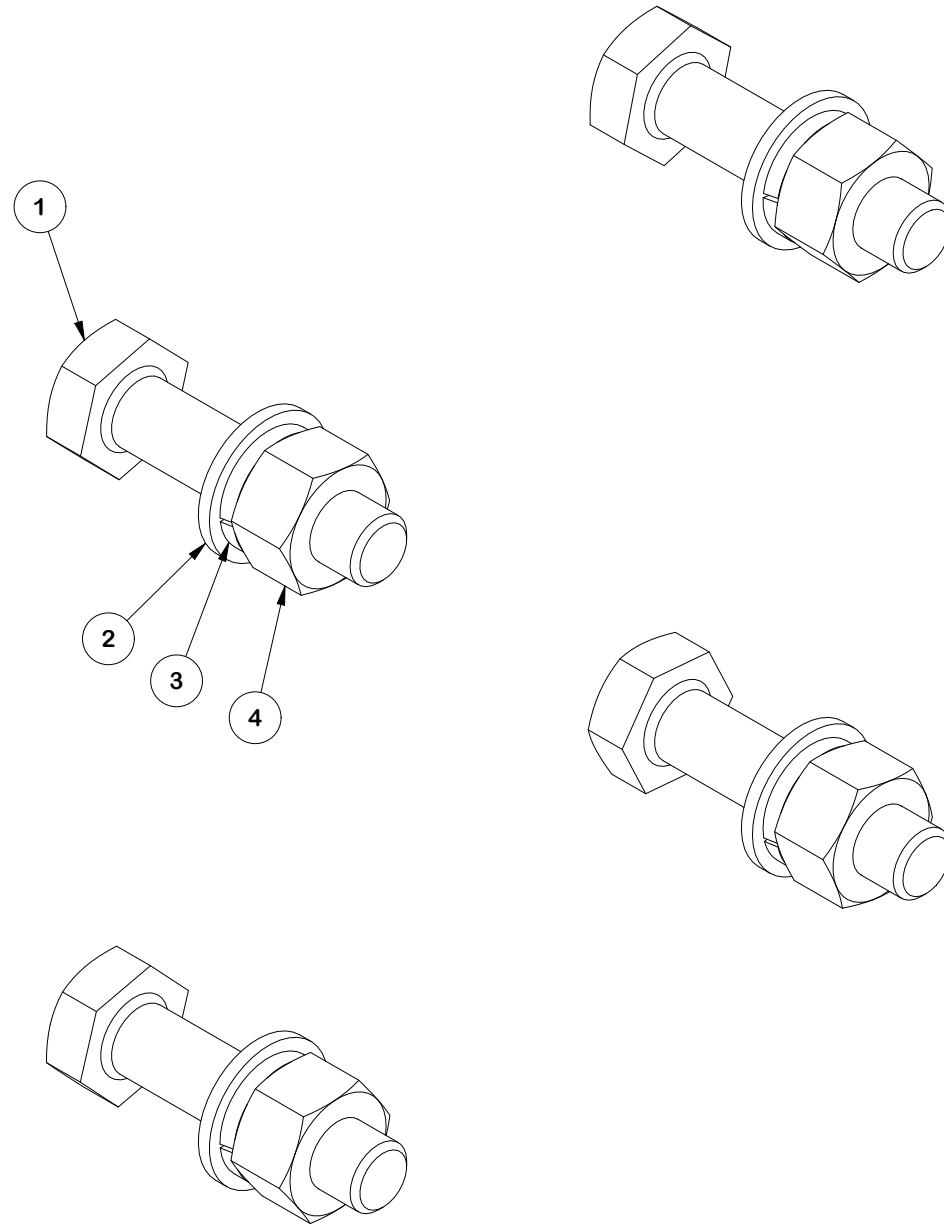
CPD NO. SP1	DRAWN BY SDR 8/26/2025	ENG. APPROVAL 2/9/2026
CLASS 87	SUB 02	DRAWING USAGE CUSTOMER
CHECKED BY CSL 2/9/2026		



Engineering
 Support Team:
 sp1engineering@valmont.com

PART NO.	
DWG. NO.	MSFAA-24-FLX4

PARTS LIST						
ITEM	QTY	PART NO.	PART DESCRIPTION	LENGTH	UNIT WT.	NET WT.
1	4	A58234	5/8" x 2-3/4" HDG A325 HEX BOLT	2 3/4 in	0.36	1.42
2	4	A58FW	5/8" HDG A325 FLATWASHER		0.03	0.14
3	4	G58LW	5/8" HDG LOCKWASHER		0.03	0.10
4	4	A58NUT	5/8" HDG A325 HEX NUT		0.13	0.52
					TOTAL WT. #	



FINISH:
HOT DIP GALVANIZED.

TOLERANCE NOTES

TOLERANCES ON DIMENSIONS, UNLESS OTHERWISE NOTED ARE:
 SAWED, SHEARED AND GAS CUT EDGES ($\pm 0.030"$)
 DRILLED AND GAS CUT HOLES ($\pm 0.030"$) - NO CONING OF HOLES
 LASER CUT EDGES AND HOLES ($\pm 0.010"$) - NO CONING OF HOLES
 BENDS AND ANGLES ARE $\pm 1/2$ DEGREE
 ALL OTHER MACHINING ($\pm 0.030"$)
 ALL OTHER ASSEMBLY ($\pm 0.060"$)

PATENT INFORMATION: WWW.SITEPRO1.COM/PATENTS

PROPRIETARY NOTE:
 THE DATA AND TECHNIQUES CONTAINED IN THIS DRAWING ARE PROPRIETARY INFORMATION OF VALMONT INDUSTRIES AND CONSIDERED A TRADE SECRET. ANY USE OR DISCLOSURE WITHOUT THE CONSENT OF VALMONT INDUSTRIES IS STRICTLY PROHIBITED.

DESCRIPTION
**MONOPOLE 4 SECTOR
 FLEX FRAME ATTACHMENT ASSEMBLY
 W/ 24" STANDOFF**



Engineering
 Support Team:
 sp1engineering@valmont.com

CPD NO. SP1	DRAWN BY SDR 8/26/2025	ENG. APPROVAL 2/9/2026
CLASS 87	SUB 02	DRAWING USAGE CUSTOMER
CHECKED BY CSL 2/9/2026		

PART NO.	
DWG. NO.	MSFAA-24-FLX4